

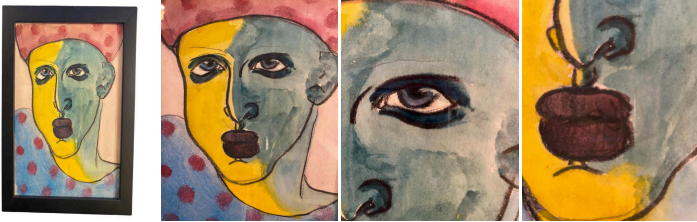
Two-Faces Colorful Pastel Portrait by Gillian Lefkowitz

As low as **\$350**

In stock

SKU

LU654315484272



Details

Art critic Jonathan Jones once said, “The power of self-portraits is that they can be as much about the observer as the observed.” The face—often called the “window to the soul”—can symbolize competing internal dialogues, the masks we wear in various contexts, and the struggles beneath the surface. Identity is not a singular entity but a composite shaped by diverse influences and conflicts.

This small-scale painting, more than a decorative work, depicts a face divided vertically into two halves: yellow and soft green. The figure, wearing a beanie and a blue sweater adorned with large red dots, raises questions about duality and the interplay between simplicity and complexity in visual art. Through an economy of line, minimalist forms, and the judicious use of color, the piece invites contemplation of the human psyche. Is this work a self-portrait of the artist? Does it explore the multifaceted nature of human identity or suggest deeper themes related to mental health?

If this artwork is a self-portrait, it introduces an introspective dimension to the inquiry. Artists frequently use self-portraiture to navigate their inner worlds, urging us to consider their intentions and reflect on our interpretations of the soul and the alignment—or disjunction—between self and others.

Gillian Lefkowitz's portraits are known to convey the mood of the person she painted. After her career as a professional photographer and Fine Art painter, Gillian became a Los Angeles-based interior decorator.



REFERENCE NUMBER: LU654315484272

PERIOD: 1970-1979

CONDITION: Good

MEASUREMENTS: Height: 10" Width: 8" Depth: 0.75"

COUNT: 1

MATERIAL: Pastel

CREATOR: Gillian Lefkowitz