



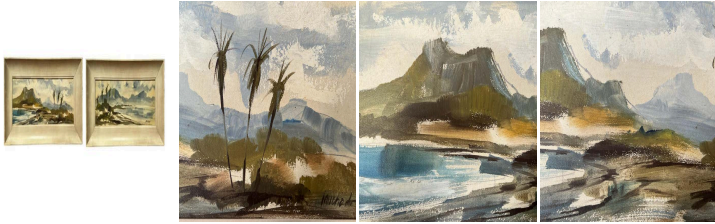
Pair of Waikiki Bay Landscape Oil Paintings

As low as \$1,200

In stock

SKU

LU654310564942



Details

Capturing the essence of Waikiki Bay, a visual symbol of Hawaii situated in Honolulu on the southern coast of Oahu, this pair of landscape-format oil paintings features the iconic trio of palm trees—a motif recurrently explored by American marine artists since 1850. One canvas places the legendary trees on the right, while the other positions them on the left.

The artist interweaves touches of color, drawing inspiration from Japanese prints to emphasize the interplay of colors and simplified patterns. The composition elegantly outlines the landscape's elements—mountains, volcano, sea, and vegetation—melding with the faded hues characteristic of vintage paintings from the 1940s.

In crafting this renowned seascape, the artist offers an alternative reality, offering a personal interpretation of Waikiki. Echoing the Impressionists, the painter seeks to convey a subjective impression of the locale, stepping away from any studio confines to capture the outer beauty of the bay enhanced by the interplay of light on the composition.

Displayed as a duo, these oil paintings invite viewers to explore parallel renditions of Waikiki Bay, providing an opportunity to appreciate the artist's unique interpretation of this Hawaiian landmark.

Both artworks are framed, yet the artist's signature remains a delightful puzzle, challenging viewers to decipher its enigmatic strokes.

REFERENCE NUMBER: LU654310564942

PERIOD: Mid-20th Century

CONDITION: Good

MEASUREMENTS: Height: 18" Width: 26" Depth: 2"

COUNT: Set Of 2

MATERIAL: Oil