



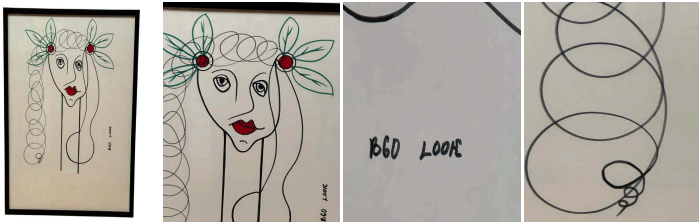
Minimalist Line Drawing Girl Portrait as homage to Picasso's Head of a Woman

As low as **\$650**

In stock

**SKU**

LU654315155972



## Details

This contemporary, minimalist, and naïve portrait invites us to reconnect with our inner child—an aspect of ourselves that delights in joy, wonder, and surprise, free from the constraints of rigid thinking. The artwork depicts a feminine face with hair styled differently on either side, like an homage to the Head of a Woman by Picasso, which was just one artwork from this extensive War and Peace series of the early 1950s.

The vibrant red of the lips and hair accessories contrasts sharply with the thick, fluid black outline that defines three-quarters of the drawing, bringing the character to life by accentuating its expressions. A subtle touch of green in the hair accessories adds a delicate highlight. This harmonious blend of red and green evokes imagery of cherries, holly leaves, and other familiar elements. To the right, the annotation "BGD LOOK" invites us to enjoy the playful game of discovering its meaning. It might represent "Be Grateful Daily," emphasizing the importance of appreciation in our lives, or "Balance, Grow, Discover," which underscores the value of personal development and exploration. So, what do you think? How does "BGD LOOK" spark your curiosity or inspire your journey?

This drawing conveys softness, vulnerability, and mystery, offering a gentle exploration of femininity. The simplicity of the lines and the careful balance of black, green, and red convey a message that sometimes—less is more—encouraging us to nurture our sense of enchantment.

REFERENCE NUMBER: LU654315155972

PERIOD: 1990-1999

CONDITION: Excellent

Copyright by Galerie Sommerlath - All Rights Reserved



---

MEASUREMENTS: Height: 29.25" Width: 23.25" Depth: 0.75"

COUNT: 1

MATERIAL: Permanent Marker