



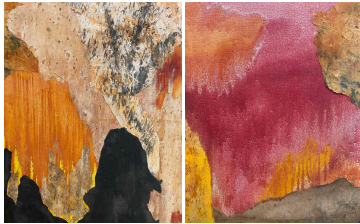
Large Orange And Black Abstract Expressionist  
Painting by Shirley Blevis

As low as **\$2,400**

In stock

**SKU**

LU654315359232



## Details

This vast abstract canvas stages a confrontation between shapes and colors, evoking the hues of autumn leaves. It is crossed by a dark, horizontal band, like a slash cleaving the space. The band resembles a dark river, dividing two distinct worlds, perhaps even distant continents.

Each world appears to be populated by imaginary landscapes: a pink forest, orange oceans, and sandy plains. With a subtle mastery of color and form where some collages appear in places, the artist — Shirley Blevis — creates a rhythmic pulse that elicits an immediate emotional response. It requires neither shared experience nor specific interpretation; the work exists in emotion and imagination, speaking to our narratives rather than a collective story. Observing becomes an intuitive process in which the viewer's inner scenery reshapes their understanding of the work.

One of abstract art's essential qualities is its ability to convey meaning through ambiguity, inviting us to craft our interpretations. Like a Rorschach test, where each person projects their perceptions onto inkblots, this canvas calls for personal reflection. Here, shades of pink and orange might suggest lush landscapes or paradisiacal ocean visions, while the ecru plains evoke tranquility or perhaps desolation, depending on the viewer's state of mind. The winding black river, crossing the center of the composition, creates a tension that simultaneously attracts and repels, acting as a boundary — or an invitation to choose — between these two worlds. It embodies a nervousness between separation and unity, suggesting a possible connection. This dichotomy mirrors the human experience, blending emotions like joy and sadness, hope and despair.

REFERENCE NUMBER: LU654315359232



---

PERIOD: Late 20th Century

CONDITION: Good

MEASUREMENTS: Height: 37.25" Width: 49.25" Depth: 1.5"

COUNT: 1

MATERIAL: Acrylic

CREATOR: Shirley Bleviss