



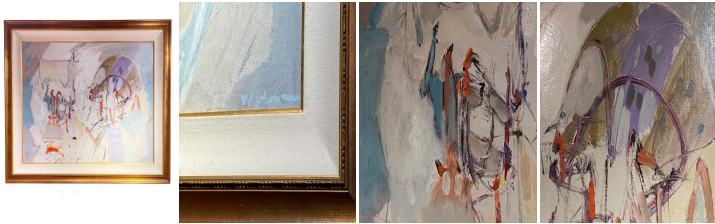
Large Light Abstract Painting in a Gild Frame by Wesley Johnson

As low as \$1,800

In stock

SKU

LU654315478462



## Details

In a poetic gesture and controlled chaos, this artwork by American painter Wesley Johnson navigates between dissolution and recomposition, offering an immersive, rhythmic exploration. Shapes and lines fade away only to reemerge with renewed clarity, teetering between the elusive and the assertive. Its lyrical energy is anchored in the multiple legacies of post-war expressionist abstraction as if suspended and celebrating becoming rather than completion. Raw and sincere, it rejects the superfluous to focus on the essential: the relationship between gesture, matter, and space.

Johnson employs an intuitive and deliberate style here, where every movement extends from an inner impulse. Tense, nervous strokes intersect while floating masses introduce zones of calm and density. Light permeates the work, unfolding in beams that navigate between shadow and transparency, illuminating each layer with an intensity that lends it sculptural depth. This large oil painting belongs to the tradition of abstraction's essential dualities: chaos and structure, spontaneity and control, the visible and the intangible. It invites us to dwell in this fertile in-between, where perception becomes an active force. As Gaston Bachelard wrote, "A little is enough to make us inhabit a dream." This is the work's essence: it does not reveal itself but instead offers itself for engagement.

Traces settle on the surface like fragmented memories, while fuller forms coalesce into nearly defined spaces. Wesley Johnson introduces a dynamic tension, balancing freedom and restraint. A luminous palette of lilac, pastel blue, and eggshell hovers like a delicate mist, disrupted by bursts of orange, red, and violet—anchoring points that challenge and shift the equilibrium. This painting does not aim to assert a fixed truth. Instead, it rejects figuration not through rupture but through openness. By embracing the fragility of human experience as its raw material, the work transcends its role as a simple visual object. It becomes a mirror—not an answer or a conclusion but an open exploration—a space where each



---

viewer may discover a reflection of themselves.

REFERENCE NUMBER: LU654315478462

PERIOD: Late 20th Century

CONDITION: Excellent

MEASUREMENTS: Height: 38.25" Width: 48.25" Depth: 1"

COUNT: 1

MATERIAL: Acrylic

CREATOR: Wesley Johnson