

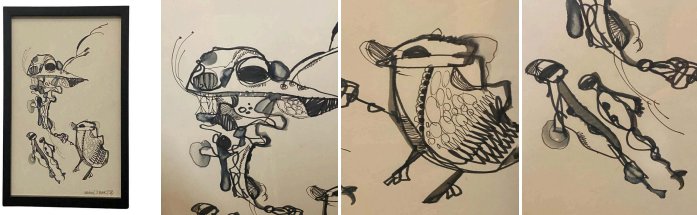
Ink drawing by Californian artist Michael Dormer

As low as **\$450**

In stock

**SKU**

LU654315775042



## Details

Dormer constructs a scene where two hybrid figures meet halfway between the organic and the mechanical. A threadlike, almost insectoid form on the left unfolds in a complex tangle of lines and splotches. Slender antennae emerge from what might be its head. Its fragmented body suggests an awkward motion suspended between momentum and imbalance. Facing it, a more compact creature resembling an anthropomorphic bird appears to extend a hand—perhaps offering a check or a high-five—a surreal yet tangible connection imbued with humor.

The absence of color heightens the interplay of contrasts: deep blacks, likely achieved through ink washes, stand against the untouched areas of the paper, creating volumes without closed contours. The paper's space remains open and unanchored, lending the composition a floating, almost dreamlike dimension. As always with Dormer - synonymous with the California surf counterculture of the 1960s and 1970s - the drawing challenges our perception of life and mutable forms. Are these figures amid metamorphosis, remnants of an internal mythology, or fragments of an enigmatic dialogue escaped from a dream?

## BIO

Michael Dormer was an American fine artist, writer, songwriter, entrepreneur, and creator of the 1960s TV show *Shrimpenstein*. His body of work is so vast that it would be more interesting for you to go on Wikipedia.

REFERENCE NUMBER: LU654315775042

PERIOD: 1960-1969



---

CONDITION: Good

MEASUREMENTS: Height: 12" Width: 9.5" Depth: 0.66"

COUNT: 1

MATERIAL: Ink, Watercolor

CREATOR: Michael Dormer