



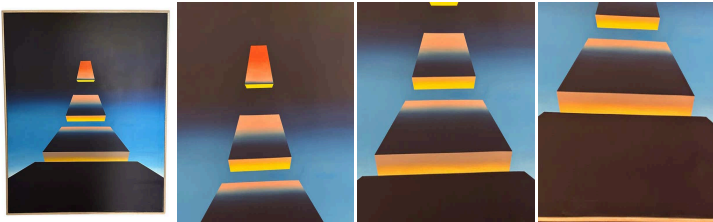
"Infinity Ramp" Large Blue, Yellow and Pink
Geometric Abstract Acrylic on Canvas

As low as **\$1,450**

In stock

SKU

LU825839440032



Details

Symbolism and allegory are essential elements in artistic expression. In this artwork, echoes of the ambiance from the legendary film "2001: A Space Odyssey" resonate. A path emerges in a vast galactic expanse, imbued with variations of blue, curving towards infinity. The upper portion of the composition draws us inward, resembling a ramp leading toward self-awareness.

Could this ramp be a metaphor for transition? A tipping point, a bridge at the end of which a philosopher's stone might stand? The passageway consists of a staircase with spaced, unjointed steps. Are these different levels moving away from each other? Or, on the contrary, are they coming closer together until they merge? What if the observer was to forge his path by rejecting the notion of duality and making a conscious choice?

The four-step opening plan immediately expresses this intention to offer the public a nonverbal visual experience based on an unsolved enigma. The first step is black and could correspond to the realm of fear on which all our emotions are built. The progression from darker to lighter hues, including bright yellow and orange, suggests a transcendence of fear and an emergence into higher realms of consciousness. The artist confronts us with our finitude while preserving the mystery of a possible passage of the human being to a higher stage of evolution.

Unfortunately, there is no signature.

REFERENCE NUMBER: LU825839440032

PERIOD: Late 20th Century



CONDITION: Excellent
MEASUREMENTS: Height: 42" Width: 42" Depth: 2.5"
COUNT: 1
MATERIAL: Acrylic, Canvas
COUNTRY OF ORIGIN: United States