



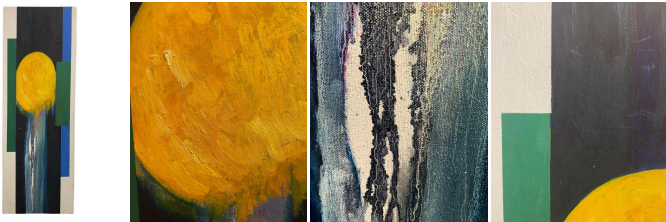
Geometric Acrylic Abstract by Mort Lampert

As low as **\$1,400**

In stock

SKU

LU654315774982



Details

This acrylic painting by Mort Lampert, dated 2002, is structured around a confrontation between rigid geometric forms and fluid textures. The composition is centered on a slightly irregular yellow disc positioned in the upper section when the artwork is viewed vertically. Its lower edge appears to dissolve into a cascade of pigment, blending deep blue, white, and darker tones, creating an impression of melting or effusion.

The black background intensifies the contrast, while asymmetrically placed green and blue rectangular shapes frame the scene. The interplay of primary colors (yellow, blue, green) and the opposition between the sharp geometric figures and the organic volatility of the paint produce a balanced and dynamic tension. The work is abstract with geometric influences, recalling elements of Bauhaus or Constructivist experimentation while incorporating the expressive fluidity characteristic of lyrical abstraction. Lampert plays with a dialogue between control and spontaneity: the color blocks form a liquid-like flow with the free movement of pigments. The dissolution effect of the yellow disc into the dark background suggests an approach where the medium's materiality plays a central role. This aligns with a modernist tradition in which color and form serve as emotional vehicles rather than purely representational elements.

The dominant yellow disc, which appears to dissolve, may evoke an astral body, a setting sun, or an energy source in transition. The downward flow of pigment creates a sense of movement, suggesting a transformation from one state to another. This dynamic, emphasized by the vertical format, conveys a sense of impermanence and change.

Interestingly, the painting can also be viewed horizontally, altering the perception of movement. In this orientation, the yellow disc appears to be rising or setting, suggesting a luminous source dissipating into a space structured by the



surrounding color fields. This dual interpretation between order and chaos, stability and transformation, enriches the reading of the work, opening infinite possibilities for dialogue between balance and instability, ascension and descent.

REFERENCE NUMBER: LU654315774982

PERIOD: Late 20th Century

CONDITION: Good

MEASUREMENTS: Height: 38" Width: 16" Depth: 1"

COUNT: 1

MATERIAL: Acrylic

CREATOR: Mort Lampert