



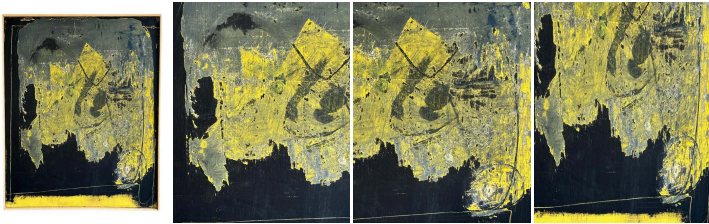
"Erased Painting" Yellow and Black Acrylic  
Abstract by Christopher Divicente

As low as **\$1,400**

In stock

**SKU**

LU654315174062



## Details

This artwork by the interdisciplinary artist Chris Di Vincente presents an exploration of space and texture, floating between abstraction and the unknown. The choice of colors—primarily shades of black and deep yellow—creates an atmosphere that is grounded and otherworldly. The yellow, applied in worn layers, appears to emerge and at the same time recede, giving the piece a sense of time and erosion, as though unseen forces have weathered the colors. The black, dense and impenetrable, serves not only as a background but as a force that frames and contains the yellow, creating a tension between containment and expansion.

The way the colors occupy the canvas reflects a balance between chaos and control, as the title "Erased Painting" suggests. The strokes and textures are spontaneously raw, yet the composition retains a clear structure. The fractured patches of color transform into a fragmented, almost archaeological exploration—each section of the canvas offers a different glimpse, a visual code in constant evolution.

There is also an elevation element as if the yellow tries to rise or break free from the darker, more earthbound black. This synergy of light and dark gives the piece an ethereal dimension, evoking notions of the sublime and the spiritual journey. The composition conveys a tension between destruction and creation, erosion and renewal, grounding the work in both the material and the metaphysical.

B I O -

Chris Di Vincente, born in New York City in 1965 and currently based in Los Angeles, is an accomplished artist whose work bridges abstract expressionism and contemporary design. He earned a Bachelor of Fine Arts from the San Francisco Art



---

Institute in 1999. He has since been featured in numerous private collections and high-profile design projects, including collaborations with Paul Michealson Design, Kelly Wearstler Inc., and the Luxe Hotel Beverly Hills. His art has appeared in the Los Angeles Times, Elle Decor, and on the set of Modern Family.

With exhibitions in prestigious venues like the Museum of Contemporary Art MOCA Fresh Auction and the Palm Springs Modernism Show, DiVicente continues to push boundaries in the art world, earning critical acclaim for his innovative and thoughtful work. His pieces often reflect a deep understanding of spatial design and emotional resonance, making them a staple in residential and public spaces.

REFERENCE NUMBER: LU654315174062

PERIOD: Late 20th Century

CONDITION: Excellent

MEASUREMENTS: Height: 24.66" Width: 24.66" Depth: 1.75"

COUNT: 1

MATERIAL: Acrylic

CREATOR: Christopher Divicente