

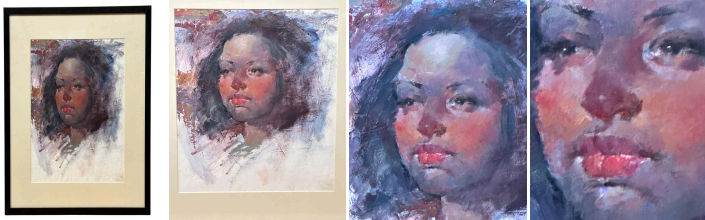
Black Girl Portrait - Gouache by Max Turner

As low as **\$550**

In stock

**SKU**

LU654312457042



## Details

A certain enigma surrounds Max Turner: he possesses both undeniable mastery and the humility of a great artist. Endowed with musicality and vibrancy in his brushwork, he remains a man of unassuming nature, far removed from the realm of trendy art galleries. His experience as an art instructor has sharpened his acuity for studying and capturing the essence of figure models, nurtured by his lifelong fascination with the human visage. In this gouache portrait, one can sense that with each stroke, he repeats a gesture as if it was the very first time, capturing that fleeting fraction of a second, an emotion, a secret of his subject to infuse into his canvases. One can feel the artist's pleasure in portraying his model, a girl with dark hair, a matte skin, while her lips are adorned with a hint of red.

As with his other portraits, Turner's distinctive style is evident in his ability to capture the enigmatic expressions and gaze of his subjects. This portrait is no exception, the intensity of the young model's gaze invites us to speculate about the story behind it and the mystery that surrounds her.

Max Turner, born in 1925 in Omaha, Nebraska, had a remarkable artistic journey. After serving in the U.S. Navy during World War II, Max settled in Southern California and pursued a career in silkscreen work. An encounter with artist Hal Reed changed his path as Max joined an art class taught by Reed and became friends. Impressed by Max's talent, Hal offered him a teaching position. Max's passion for painting and sculpting grew, with his portraits drawing comparisons to Nicolai Fechin's work.

In his 70s, Max focused solely on sculpting, creating about 100 full-size sculptures sold to prestigious clients and



---

Hollywood studios. He continued teaching painting classes at the California Art Institute alongside renowned artists. Max authored several books showcasing his drawings and paintings, highlighting his mastery of capturing human expression.

His works continue to be cherished by art enthusiasts, leaving a lasting impact.

REFERENCE NUMBER: LU654312457042

PERIOD: Mid-20th Century

CONDITION: Excellent

MEASUREMENTS: Height: 23.75" Width: 20.75" Depth: 0.5"

COUNT: 1

MATERIAL: Gouache

CREATOR: Max Turner (Painter)